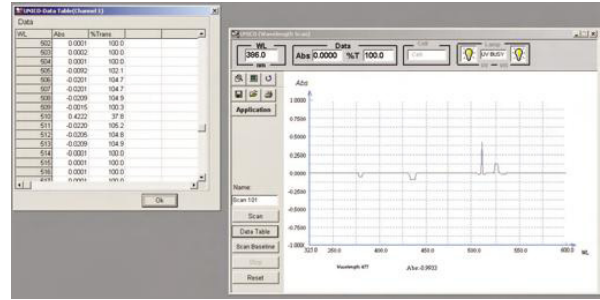


Spectrophotometer Application Software (ST-S2100P-401)

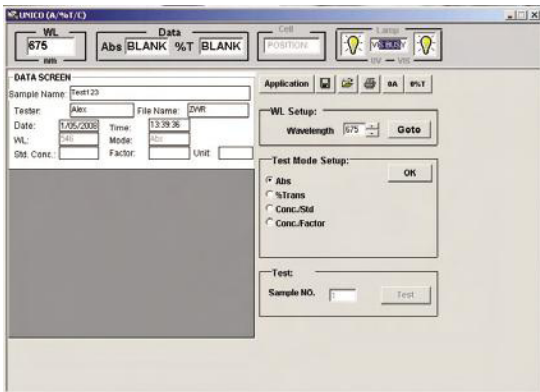
- This software is designed for Windows® 2000, ME, or XP operating systems. Install the Windows based software and start collecting your data.
- The Application Software expands your applications, assists in your data documentation and provides complete control of the spectrophotometer from a computer, rather than the instrument panel.
- Applications include:
 1. Abs./ %T/ cONC.
 2. Standard Curve (Quantitative)
 3. Kinetics (Abs. vs. Time)
 4. Scanning
 5. DNA/ Protein Ratio (UV Range only)

Wavelength Scanning Software

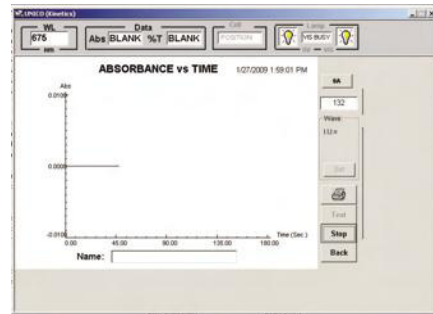


- 1. Full or partial wavelength scans; set the range required by applications.
- 2. Automatically record peaks and valleys
- 3. Re-scaling axes, curves

Abs. / %T/ Conc

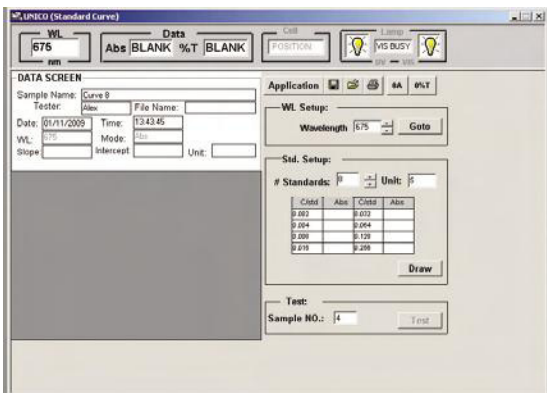


- Measure absorbance, transmittance or concentration with standard or known factor.

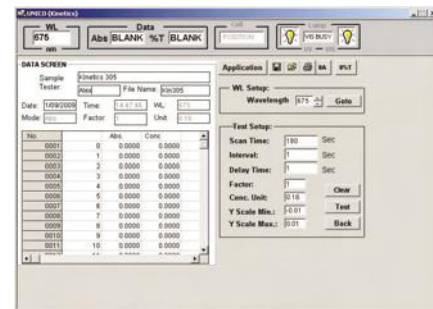


- The kinetics mode may be used for time course scanning or reaction rate calculations. Abs. vs. time graphs is displayed on the screen in real time and saved.

Quantitative (Standard Curve)



- Use up to 8 standards to establish standard curve. Features four methods for fitting a curve.
 1. Linear fit
 2. Square fit through zero
 3. Square fit
 4. Segmented



- Wait time, measurement time and time intervals may be entered.

DNA/ Protein

- Concentration and DNA purity are calculated:
 Absorbance ratios 260nm/ 280nm with optional subtracted absorbance at 320nm.
 DNA Concentration = 62.9 x A260 - 36.0 x A280
 Protein Concentration = 155.2 x A260 - 757.3 x A280
 Additional wavelengths and factors may be programmed and saved.