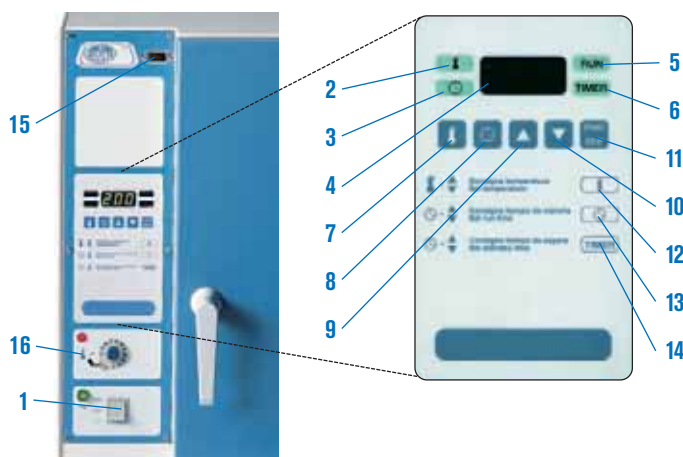


CONTROL PANEL

1. Illuminated mains switch.
2. Temperature mode indicator.
3. Time mode indicator.
4. Display for temperature and time.
5. Operating, run mode.
6. Delay time indicator.
7. Push button for temperature selection.
8. Push button for time selection.
9. Push button to "increase" value or parameter.
10. Push button to "decrease" value or parameter.
11. Push button to Stop/Start.
12. Set temperature.
13. Set run time: time period from 1 minute to 9 hours 59 minutes, or up to 99.9 hours (once the set temperature value has been reached).
14. Set wait time before starting the run, time period from: 1 to 24 hours.
15. RS-232 Interface output to a computer, printer or USB adapter.
16. Adjustable safety thermostat. Maintains the temperature in case the microprocessor fails. Indication lamp.



MODELS

Part No.	Type	Capacity litres	Height / Width / Depth (interior) cm	Height / Width / Depth (exterior) cm	N° of shelf guides	Power W	Weight Kg
2000237	1 door	288	80 60 60	97 91 76	8	570	87
2003711	2 door	400	100 80 50	130 114 75	10	1100	160
2002471	2 door	720	120 100 60	152 134 85	12	1600	225

ACCESSORY



4120131 USB adapter model.
Pen-Drive included (Memory board) for data storage.

Accessories must be factory installed.



2000016 Digital printer for time and temperature with numerical printout on continuous paper roll, with print intervals from 1 minute to 99 hours.

SPARES

Shelves and guides.

Oven Part No.	2000237	2003711	2002471
Shelves	2002372	2000063	2000064
Guides (2) (Set)	2002371	-	-

Each self requires two guides i.e. one set.



Incubation chamber "Boxcult"

FAN CONVECTION.

ADJUSTABLE TEMPERATURES FROM AMBIENT +5 °C UP TO 57 °C.

STABILITY: ±0.25 °C, UP TO 37 °C HOMOGENEITY: ±1 °C, UP TO 37 °C.

SET ERROR: ±2 % OF THE WORKING TEMPERATURE. RESOLUTION 0.1 °C.

SAFETY: SAFETY STANDARD EN 61010. OVER TEMPERATURE SAFETY THERMOSTAT FITTED.

FEATURE

Made of transparent methacrylate that allows the user to see inside the incubator during operation. To facilitate the access to the working area the unit has a wide front door, and a removable base made of AISI 304 stainless steel.

The fan convection circulation system ensures an even and rapid recovery of temperature.

A 30 mm Ø port at the rear can be used to connect power to apparatus inside the chamber.

Supplied as accessories, the removable base allows the Boxcult to be mounted on the "Rotabit" reciprocal / orbital shaker. (described in the stirrer section.)

The metallic top of the chamber includes the heating elements, air circulation fan and temperature control.

CONTROL PANEL

Main switch.

Digital electronic temperature control.

MODEL

Part No.	Capacity litres	Height / Width / Depth (interior) cm	Height / Width / Depth (exterior) cm	Power W	Weight Kg
3000957	110	50 47 47	61 51 51	220	18

Supplied without bottom base, or stainless steel rack and shelves.

ACCESSORIES

Removable bottom base made of AISI 304 stainless steel. Part No. **3001172**

Stainless steel rack with 4 shelves positions, each one separated by 9 cm. Comes complete with 2 removable shelves. Useful dim. 43 cm long and 41 cm wide. Part No. **1000973**



Incubation chamber "Boxcult" Part No. 3000957 with base Part No. 3001172 and support rack with two shelves Part No. 1000973. Supplied as accessories.